

Mini Cruiser



Mini Cruiser introduces a new way to take to the water: power surfing. Our inflatable water baby makes it easy and fun. So small and light, it rides in the trunk. So powerful, with a 3.5 hp TOHATSU engine, capable of up to 15 kilometres per hour! In small breakers, the Mini Cruiser handles with ease. To steer, simply shift your weight. It's safe for the surfer (the enclosed propeller is finger proof), and safe around swimmers.

If you like to spend your summers on the beach or lakeside, or are already in the marine sports hire business, own a motel or other business close to a busy beach or lake then for you this is the most outstanding money making opportunity of 1987.

Invest as little as \$1500 and be your own boss this summer doing Mini Cruiser beach hire.



Specifications

Length	1600 mm
Width	680 mm
Weight	18.2 kg
Engine	TOHATSU 3.5 hp water cooled.
Screw	Completely enclosed safety type.
Starter	Manual
Fuel	Regular or Unleaded
Gas to fuel mixture	30:1 - 50:1
Tank capacity	1.7 litre (about 60 min. cruising)
Speed	15 km
Surf rider	Inflatable, 3 separate compartments

\$1500
INCLUDES
G.S.T.

- Low capital input, high cash returns.
- Recommended hire charge \$15 per half hour.
- Unique marine product totally new to New Zealand.
- Ideal ship to shore and windsurfer recovery.
- Comes complete ready to go with 3.5 hp engine, inflatable surf rider, foot pump and tool kit for only \$1500!

A NEW KIND OF SPORT BOAT FOR A NEW KIND OF SPORT.

Free Trial and Demonstrations

Monday 19th and Tuesday 20th January
Sunday 25th and Monday 26th January
at Milford Beach

The Mini Cruiser. Fun for all the family.

Just write to — Indo-Oriental Import Co. Ltd, Private Bag, Takapuna.
Or phone me now on Auckland 410 8831 for further information.

CHESS

1990s challenge?

by Murray Chandler

THE NEW ZEALAND men's team in Dubai scored its best Olympiad performance by finishing in 31st-38th equal position out of 108 countries. This placing, and the overall tally of 30 game points, compares with Lucerne 1982 (28 points) and Thessaloniki 1984 (29 points). While a gain of two points over a 14-round, four-board competition may seem modest, it represents four extra wins (assuming the usual result is a draw). This time the USSR took gold with only 40 points so at this rate we can expect to be challenging for medals in the 1990s! A dream? Small countries can do it: Iceland (population 230,000) finished fifth this time.

One advantage that the national six-man squad had was the relative evenness of strength of the players. This can be most helpful under Swiss-system pairings, as good results by only one or two individuals have limited value if the rest of the team gets crushed.

Especially noteworthy were the four hard-fought draws against 22nd seeds Finland in the last round, while the two members who rested that match — wily veteran Ortvin Sarapu and youthful Tony Love — notched up the best percentage scores.

Once again both our men and women had to find the bulk of the air fares themselves, although on arrival it became known that the Dubai government had actually paid the travel costs of many struggling countries.

The women's Olympiad, also won by the Soviets, was as usual contested over only three boards. Some missing top players and an unavoidable late withdrawal meant that New Zealand played without a reserve. We finished in 39th-43rd equal position out of 49 countries, with individual results being Vivian Smith 7½/14, Jackie Sievey 8/14 and Elaine Tweddell 4/14.

Although the Arab Emirates in November were not as baking hot as perhaps expected, I am grateful I didn't have to play all 14 rounds. Exhaustion would be no excuse for the Japanese man on the wrong side of Paul Garbett in this round one game, however. Off the chessboard, former national champion Garbett is one of the pleasantest people around — but look as his move 32 in this game. Keep this man away from your kingside.

SICILIAN DEFENCE

P GARBETT
1. e4

S SUGAYA
c5

2. Nf3 e6
3. d4 cxd4
4. Nxd4 Nf6
5. Nc3 d6
6. g3 Be7
7. Bg2 a6
8. 0-0 Qc7
9. a4 Nc6
10. Nb3 b6
11. f4 Bb7
12. Be3 0-0
13. Qe2 Nb4
14. Rfd1 d5?
15. e5 Nd7

Black's break on move 14 was premature as the blocked centre encourages White to seek a kingside initiative.

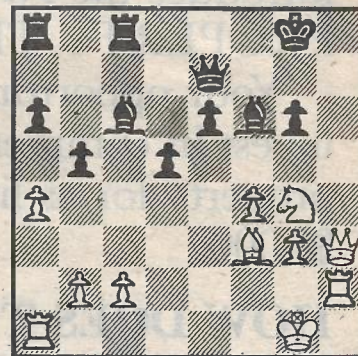
16. Bf2 Nc5
17. Nd4 g6
18. Rd2 Nc6
19. h4 Nxd4
20. Bxd4 Bc6
21. h5 Rf8
22. Qg4 Bf8
23. hxg6 hxg6
24. Bf3 Bg7
25. Qh3 Nd7
26. Nd1!

The knight heads for g4 to reinforce the attack. Black's counterplay has failed to materialise.

26. ... Qd8
27. Ne3 Qe7
28. Rh2 b5
29. Ng4 f5

White threatened 30. Qh7 ch Kf8 31. Nf6 Nxf6 32. exf6 Bxf6 33. Qh8 ch! Bxh8 34. Rxh8 checkmate.

30. exf6 e p Nxf6
31. Bxf6 Bxf6



32. Qh7 ch!

A lovely tactical finesse. On 32. ... Kf8 follows 33. Qxg6 Bxb2 34. Ne5! Bxe5 35. fxg6 Qg7 36. Qxe6 with a raging attack as 36. ... Qxg3 ch loses to 37. Rg2 Qxf3 38. Rg8 mate. Sugaya commits hara-kiri instead.

32. ... Qxh7
33. Nxf6 ch Kg7
34. Nxh7 bxa4
35. Ng5 Kf6
36. Re1 Resigns

NEW ZEALAND MEN, DUBAI OLYMPIAD 1986

	Japan	Wales	Uruguay	Luxembourg	Switzerland	Nicaragua	Bolivia	Poland	Tunisia	Thailand	Sri Lanka	Singapore	Bangladesh	Finland	Played	Points	Percentage
O Sarapu	1	—	—	1	0	½	—	½	—	½	1	—	½	—	8	5	62.5
V Small	—	1	½	—	½	½	—	0	½	—	½	0	1	½	10	5	50
P Garbett	1	½	0	—	0	—	1	0	—	1	—	0	—	½	9	4	44.4
R Smith	0	½	—	1	½	—	1	0	½	—	½	½	—	½	10	5	50
J Sarfati	—	0	0	1	—	½	1	—	0	1	½	—	1	½	10	5½	55
T Love	1	—	½	½	—	½	1	—	½	0	—	½	1	—	9	5½	61.1
Team total	3	2	1	3½	1	2	4	½	1½	2½	2½	1	3½	2	56	30	53.57